

SWE225E-3H

◆ Overall system monitoring

Water temperature monitoring, oil pressure/oil level monitoring, air inlet temperature monitoring, engine speed monitoring, water in fuel alarm and motor protection.

◆ Wider applicability

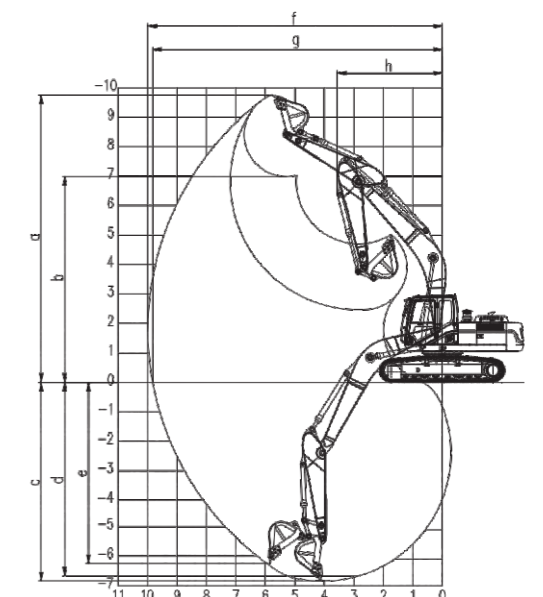
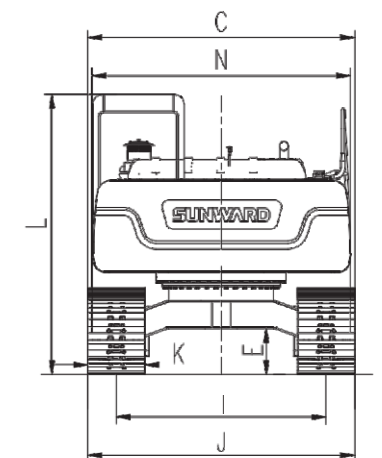
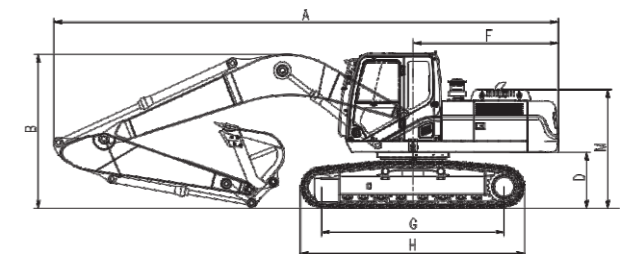
It can be optionally equipped with dozer blade and a variety of accessories, with wider applicability.

◆ Mature and reliable imported hydraulic system

Strong comprehensive operation ability and high efficiency.

◆ Self-adaptive control technology, high efficiency and energy saving

Our self-developed load self-adaptive control technology is applied, which can dynamically coordinate and control the engine and the hydraulic pump, greatly improve the power utilization of the hydraulic system while ensuring the economic performance of the engine fuel, and make the excavation operation efficient and fuelsaving.



ENGINE		UNIT	SWE225E-3H
Working weight		kg	22400
Capacity of bucket		m ³	1.1
Engine	Brand		Cummins
	Type		QSB7
	Rated output power	kW/rpm	124/2050
Dimension parameters	A Transportation length	mm	9570
	B Transportation height	mm	2970
	C Total width	mm	2990
	D Counterweight ground clearance	mm	1060
	E Min. ground clearance	mm	478
	F Tail slewing radius	mm	2750
	G Ground contact length of track	mm	3465
	H Track length	mm	4260
	I Track gauge	mm	2390
	J Track width	mm	2990
	K Creeper tread width	mm	600
	L Cab height	mm	2960
	M Hood height	mm	2710
	N Turntable width	mm	2830
Scope of work	a Maximum excavation height	mm	9750
	b Maximum dumping height	mm	6980
	c Maximum digging depth	mm	6750
	d Digging depth (2.44 mhorizontally)	mm	6560
	e Maximum vertical digging depth	mm	5900
	f Maximum digging distance	mm	9940
	g Maximum digging distance on ground	mm	9775
	h Minimum front slewing radius	mm	3560
Swing arm length		mm	5700
Bucket arm length		mm	2920
Bucket arm digging force		kN	110
Bucket digging force		kN	155
Speed (high/low)		km/h	5.2/3.3
Slewing speed		rpm	11.8
Fuel tank capacity		L	370
Hydraulic fuel tank capacity		L	250