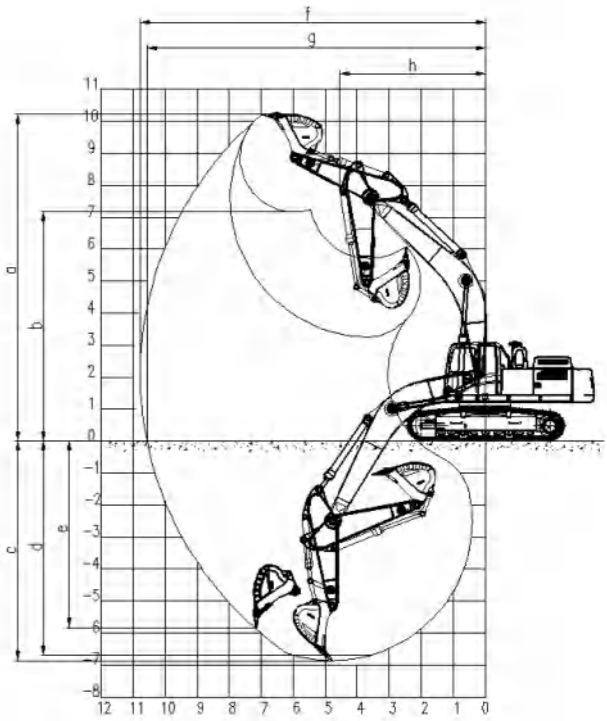
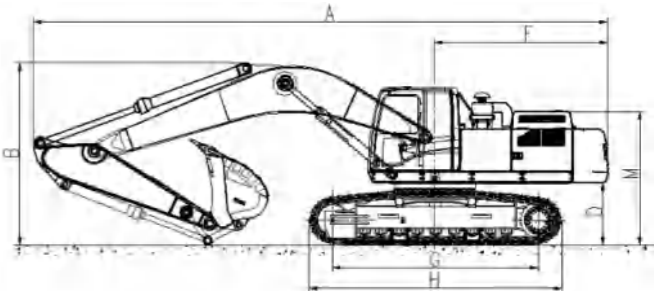




SWE365E



- ◆ Tier II emission engine with maximum power and stronger power.
- ◆ Large drift diameter KYB400 valve, with its flow capacity increased by 56%.
- ◆ The left and right integrated welded anti collision boundary beams are equipped.
- ◆ The digging force is greater that of other excavators of the same tonnage.
- ◆ Heavy 6.5 m swing arm + heavy 2.9 m bucket arm, good reliability.
- ◆ A 1.8 m³ hyperbolic rock bucket is equipped.



ENGINE		UNIT	SWE365E
Working weight		kg	36800
Capacity of bucket		m ³	1.8
Engine	Brand		ISUZU
	Type		AA-6HK1XQP
	Rated output power	kW/rpm	190.5/2000
Dimension parameters	A Transportation length	mm	11100
	B Transportation height	mm	3400
	C Total width	mm	3190
	D Counterweight ground clearance	mm	1200
	E Min. ground clearance	mm	537
	F Tail slewing radius	mm	3300
	G Ground contact length of track	mm	4030
	H Track length	mm	4945
	I Track gauge	mm	2590
	J Track width	mm	3190
	K Creeper tread width	mm	600
	L Cab height	mm	3080
	M Hood height	mm	2675
	N Turntable width	mm	2960
Scope of work	a Maximum excavation height	mm	10525
	b Maximum dumping height	mm	7450
	c Maximum digging depth	mm	7455
	d Digging depth (2.44 mhorizontally)	mm	7280
	e Maximum vertical digging depth	mm	6920
	f Maximum digging distance	mm	11330
	g Maximum digging distance on ground	mm	11130
	h Minimum front slewing radius	mm	4425
Swing arm length		mm	6500
Bucket arm length		mm	2900
Bucket arm digging force		kN	168
Bucket digging force		kN	250
Speed (high/low)		km/h	5.8/3.6
Slewing speed		rpm	9.1
Fuel tank capacity		L	650
Hydraulic fuel tank capacity		L	320