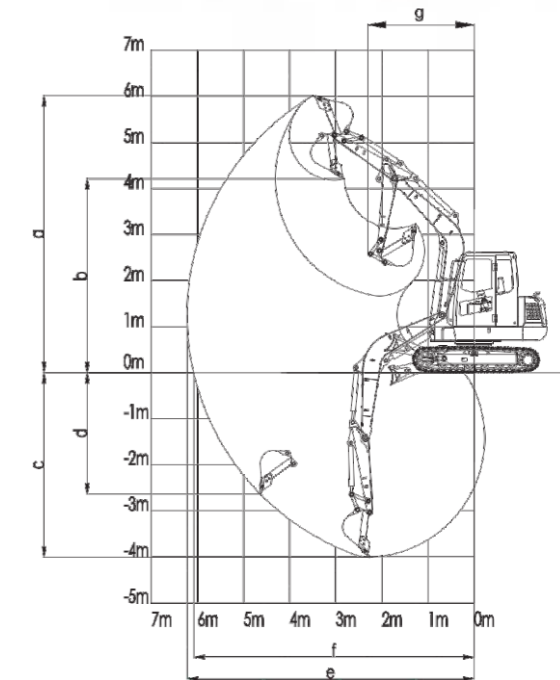
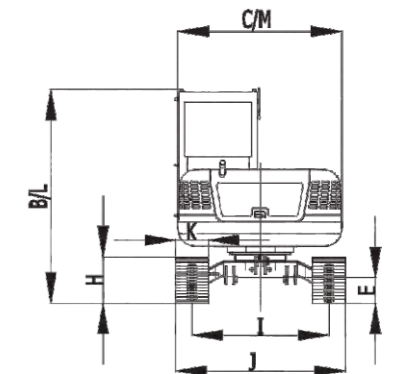
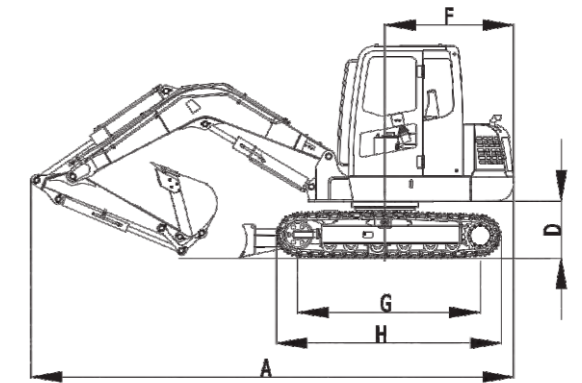




SWE70E



- ◆ Fuel consumption is reduced by 18% and efficiency is improved by 18%.
- ◆ The bucket arm circuit adopts a new type of three-pump confluence technology, which improves the speed of bucket arm and ground operation.
- ◆ It is the first cab in China that adopts a new skeleton-type design and meets the European [FOPS/TOPS] standard.
- ◆ Improved high torque traveling motor and reducer pinion and slewing mechanism with increased slewing bearing strength



ENGINE		UNIT	SWE70E
Working weight		kg	6560
Capacity of bucket		m ³	0.26
Engine	Brand		YANMAR
	Type		4TNV98-ZCSSU
	Rated output power	kW/rpm	46.3/2200
Dimension parameters	A Transportation length	mm	5910
	B Transportation height	mm	2625
	C Total width	mm	2080
	D Counterweight ground clearance	mm	700
	E Min. ground clearance	mm	340
	F Tail slewing radius	mm	1580
	G Ground contact length of track	mm	2240
	H Track length	mm	2760
	I Track gauge	mm	1680
	J Track width	mm	2080
	K Creeper tread width	mm	400
	L Cab height	mm	2625
	M Turntable width	mm	2080
Scope of work	a Maximum excavation height	mm	6020
	b Maximum dumping height	mm	4200
	c Maximum digging depth	mm	4015
	d Maximum vertical digging depth	mm	2840
	e Maximum digging radius	mm	6225
	f Maximum digging radius on ground	mm	6085
	g Min. slewing radius	mm	2305
Swing arm length		mm	3150
Bucket arm length		mm	1610
Bucket arm digging force		kN	31
Bucket digging force		kN	50
Speed (high/low)		km/h	4.0/2.3
Slewing speed		rpm	9
Fuel tank capacity		L	118
Hydraulic fuel tank capacity		L	96